

Micron Windows NVMe driver Installation Guide

Contents

- 1. OS Supported2
- 2. Installing Micron NVMe driver on a Windows System2
 - 2.1 INSTALLING THE DRIVER IN WINDOWS OS – MICRONNVMEDRIVERS_X64.MSI2
 - 2.2 INSTALLING THE DRIVER IN WINDOWS OS – SETUP FILE (MTINVME.INF)3
- 3. Uninstalling Micron NVMe driver on a Windows System5
 - 3.1 Using Device Manager to Uninstall Devices and Driver Packages.....5
 - 3.2 Using MicronNVMePCleSSDDriversX64.msi file for auto uninstallation.7
 - 3.3 Using “Add or remove programs”8

1. OS Supported

x64_Legacy = Windows 7 and Server 2008

x64 = Windows 8, 8.1, 10, Server 2012R2, Server 2016, Server 2019

2. Installing Micron NVMe driver on a Windows System

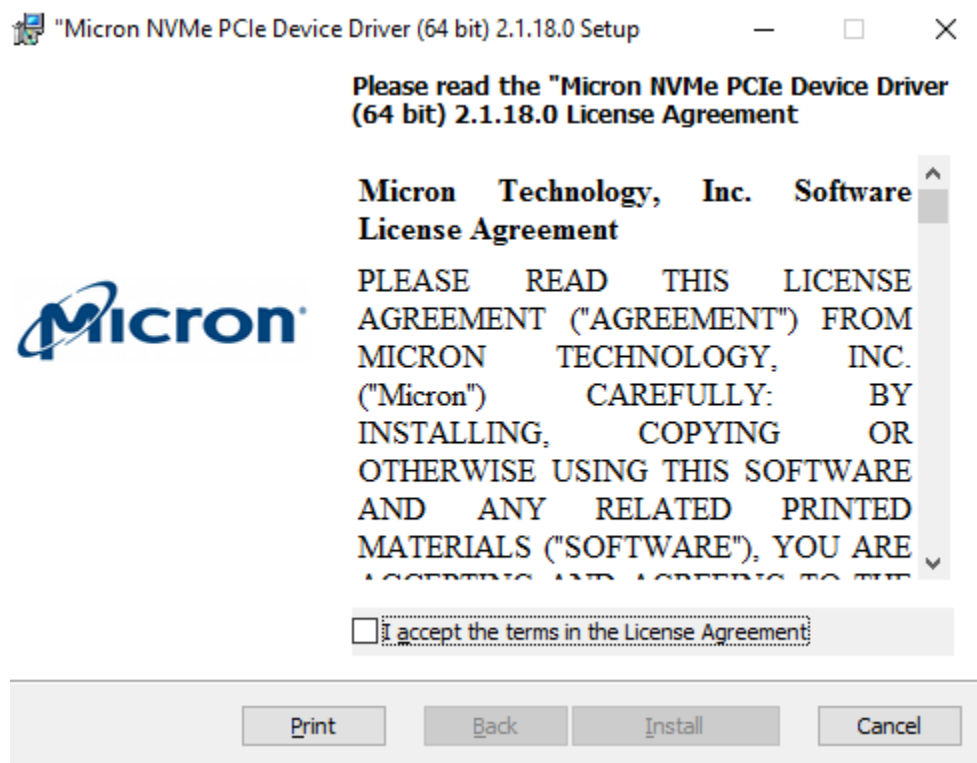
The Micron NVMe driver can be installed using either of the following methods:

1. Use MicronNVMePCIeSSDDriversX64.msi file for auto installation.
2. Use Windows setup file (mtinvme.inf) for manual installation in the Device Manager.

Windows provides NVMe inbox driver by default.

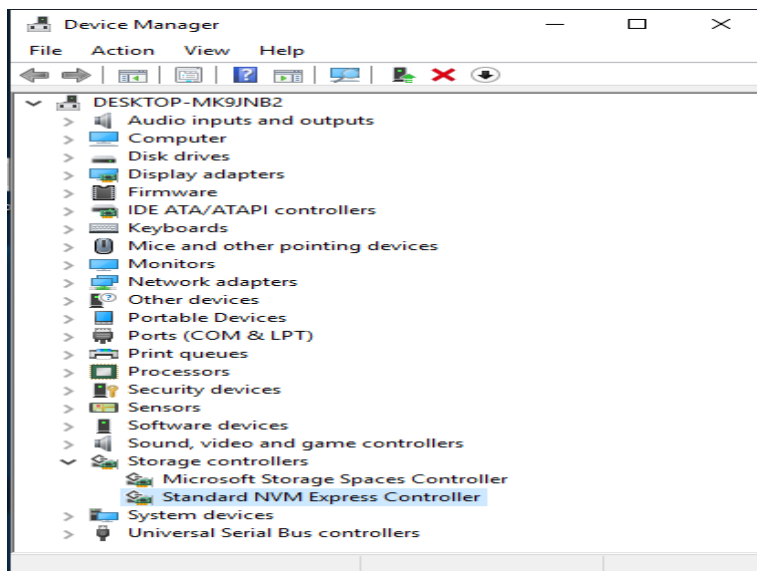
2.1 INSTALLING THE DRIVER IN WINDOWS OS – MICRONNVMEDRIVERS_X64.MSI

1. Power on the system and log on with the admin account.
2. Copy MicronNVMePCIeSSDDriversX64.msi to the installation folder.
3. Double-click the MicronNVMePCIeSSDDriversX64.msi file, accept license terms and conditions and follow on-screen instructions.

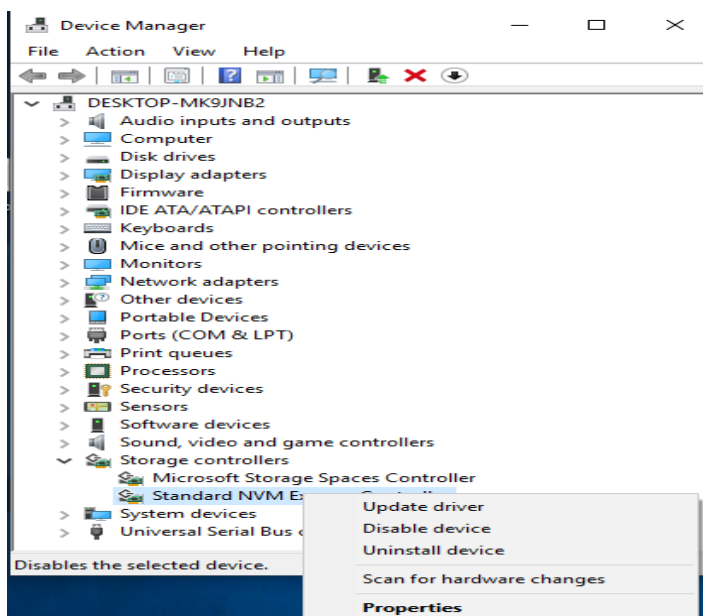


2.2 INSTALLING THE DRIVER IN WINDOWS OS – SETUP FILE (MTINVME.INF)

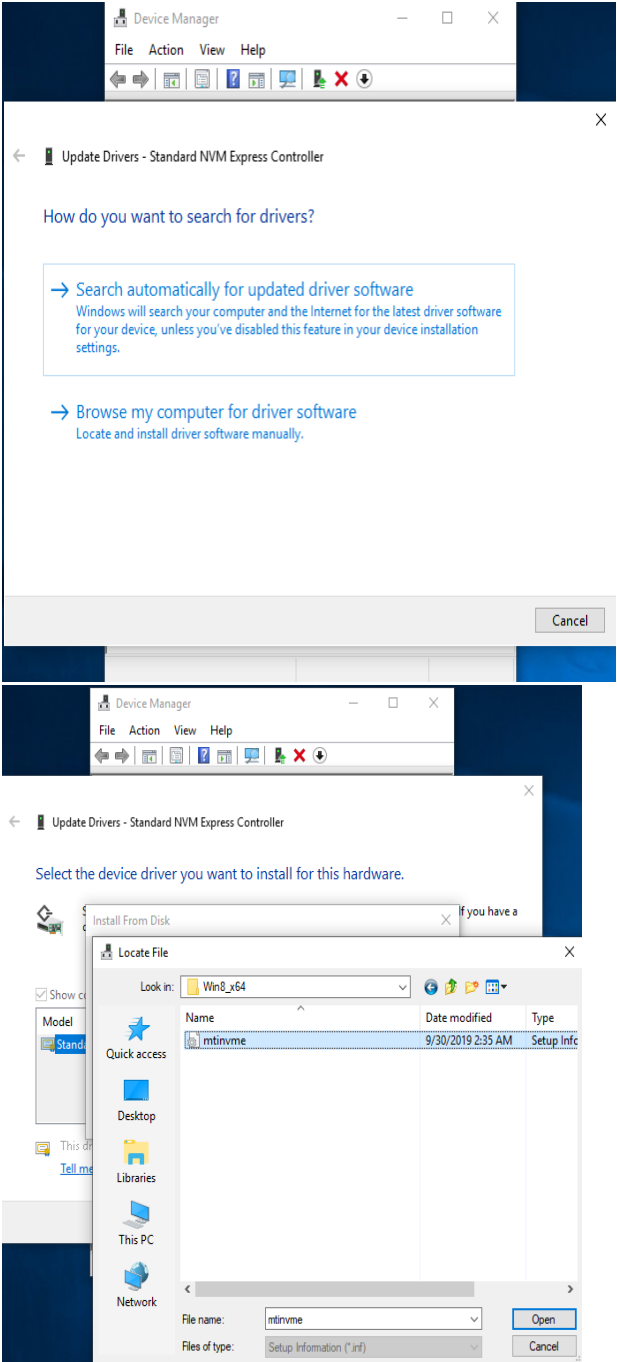
1. Boot the Windows OS.
2. Copy the Windows driver folder x64/x64_Legacy to the system.
3. Start the Device Manager.



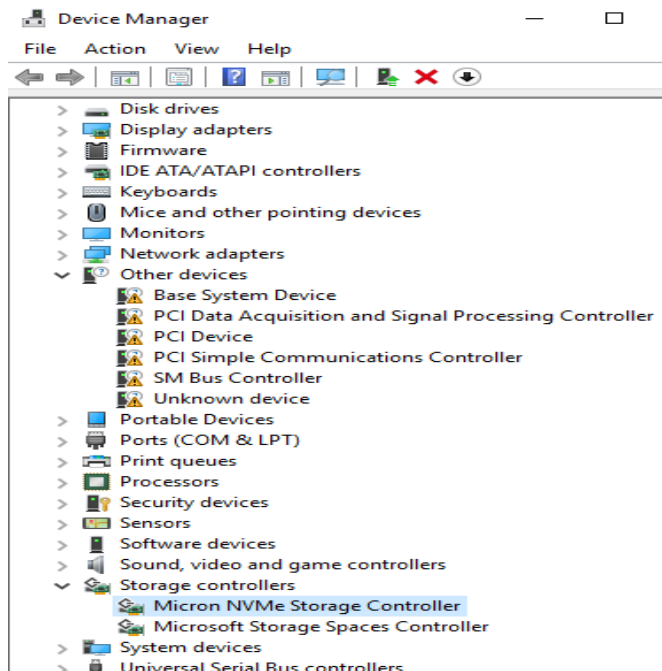
4. In the Device Manager, select the “Standard NVMe Express Controller” under “Storage Controller” where the driver is to be installed, and then right-click the item to select Update Driver Software



5. Find the Windows driver and update the driver software



6. In the Device Manager, verify the driver software is successfully installed under "Storage controllers."



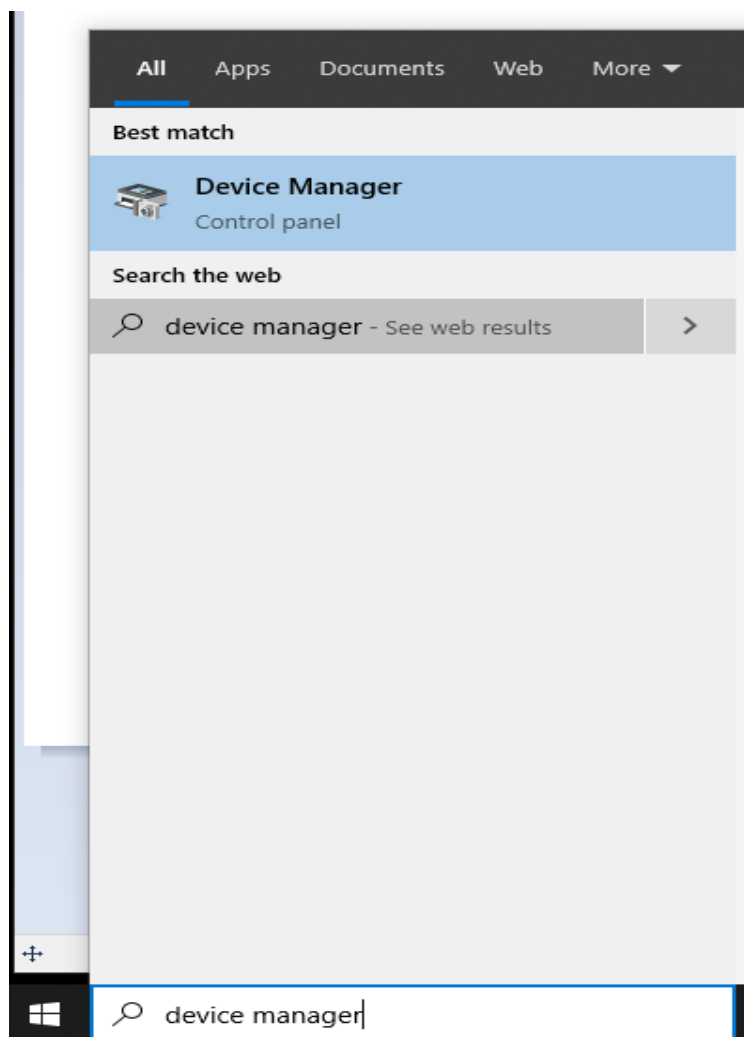
3. Uninstalling Micron NVMe driver on a Windows System

The driver can be uninstalled using either of the following methods:

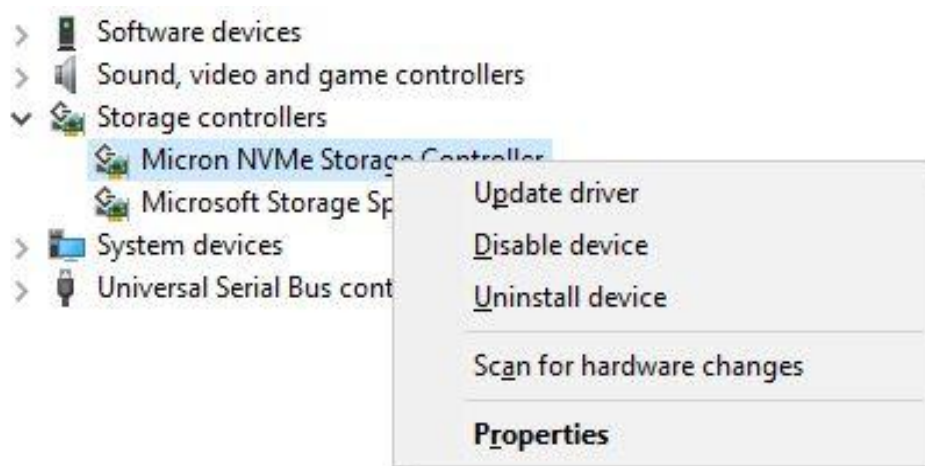
1. Using Device Manager to Uninstall Devices and Driver Packages
2. Using MicronNVMePCIeSSDDriversX64.msi file for auto uninstallation.
3. Using “Add or remove programs”

3.1 Using Device Manager to Uninstall Devices and Driver Packages

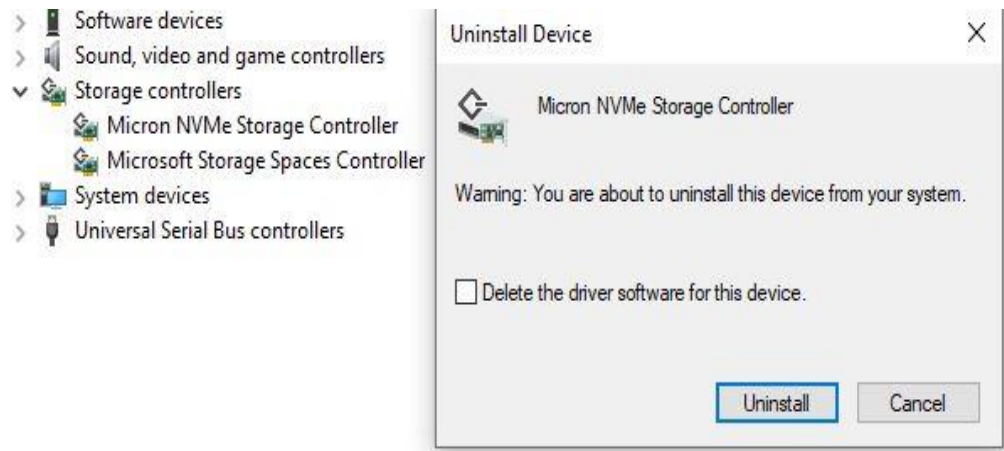
4. Right Click on Start panel and then click Device Manager.



5. Select "Micron NVMe Storage Controller" under Storage Controller



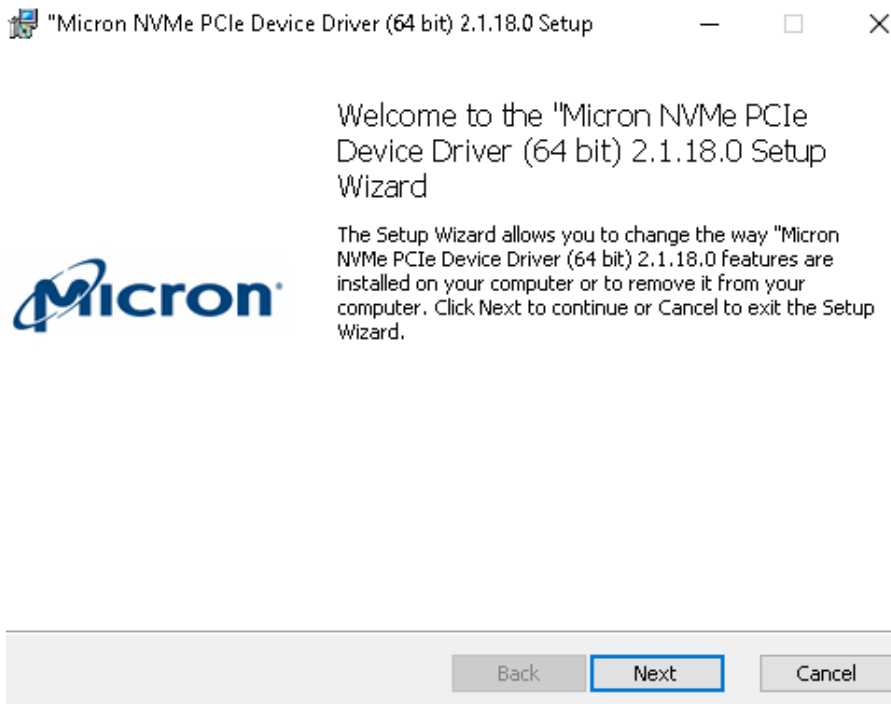
- 6. Right click on Micron NVMe Storage Controller and then click Uninstall device



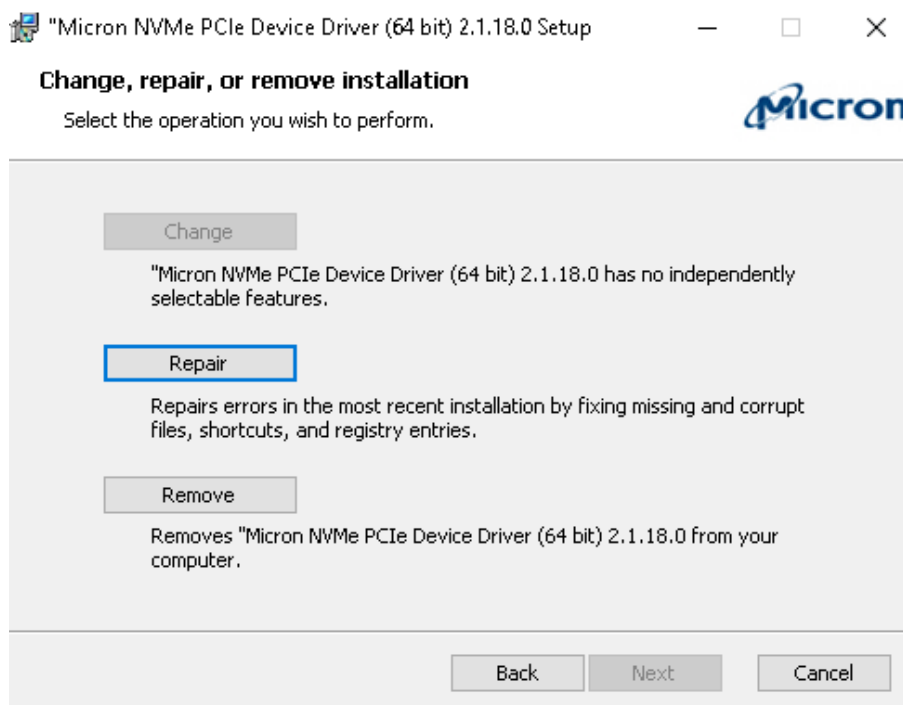
- 7. Click on check box to delete the driver software and click uninstall to uninstall the driver.

3.2 Using MicronNVMePCIeSSDDriversX64.msi file for auto uninstallation.

- 1. Double click on installer file and click next (User must use the same version of installer to uninstall the driver).



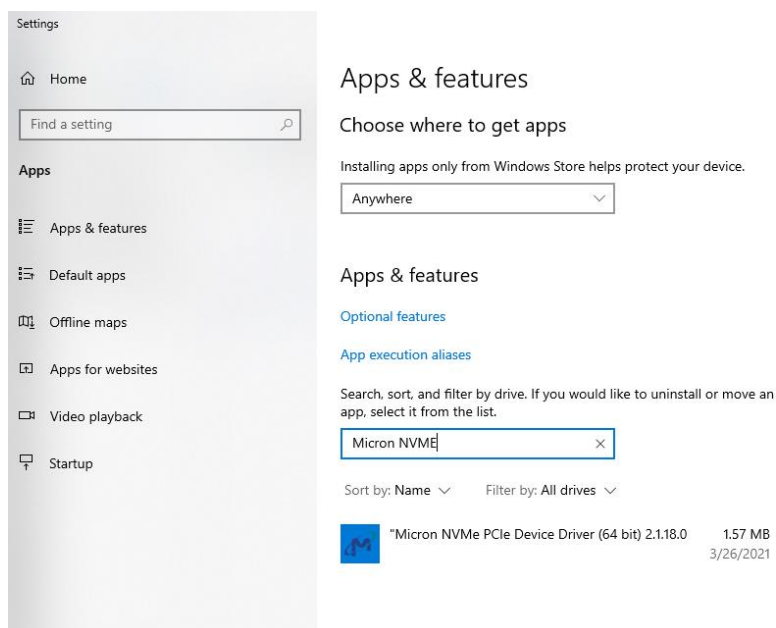
2. Click Remove to uninstall the driver package



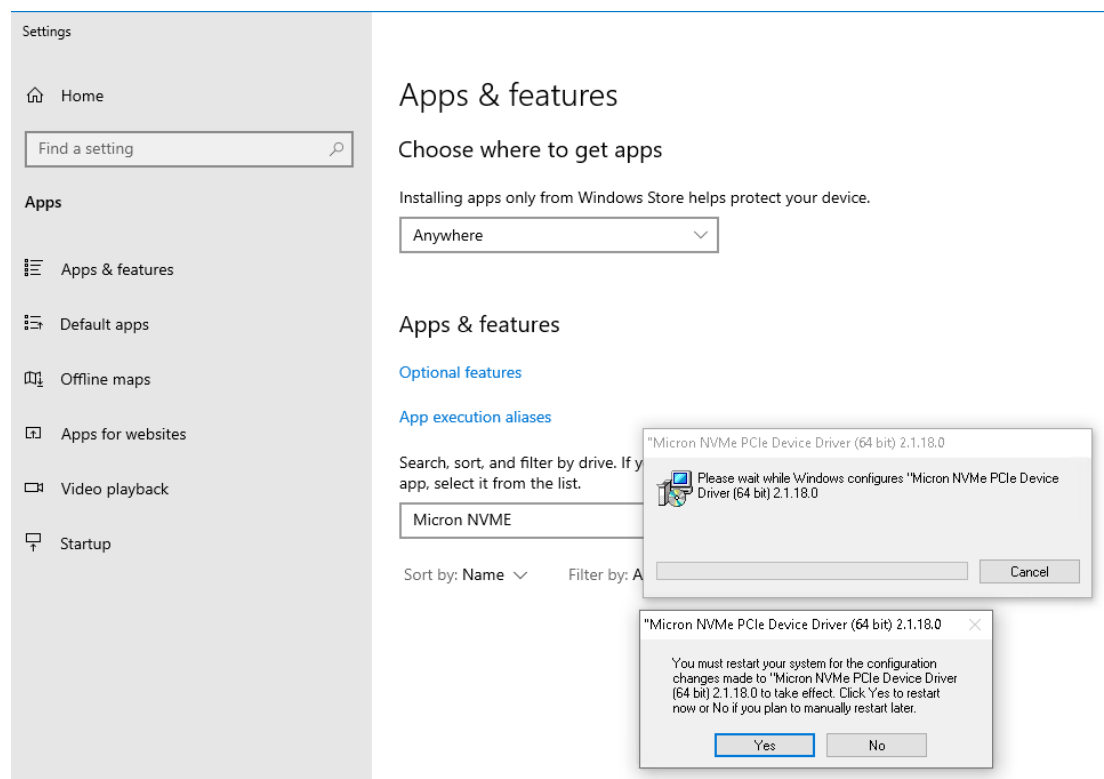
3.3 Using "Add or remove programs"

Note: This Uninstall method works if the driver is installed through MSI or EXE.

1. Go to Add or remove programs and search for Micron.



- 2. Select “Micron NVMe PCI Device Driver” and then click remove to uninstall the driver.



- 3. Click on ‘Yes’ for system restart, if the GUI prompts for the Driver clean uninstall.